

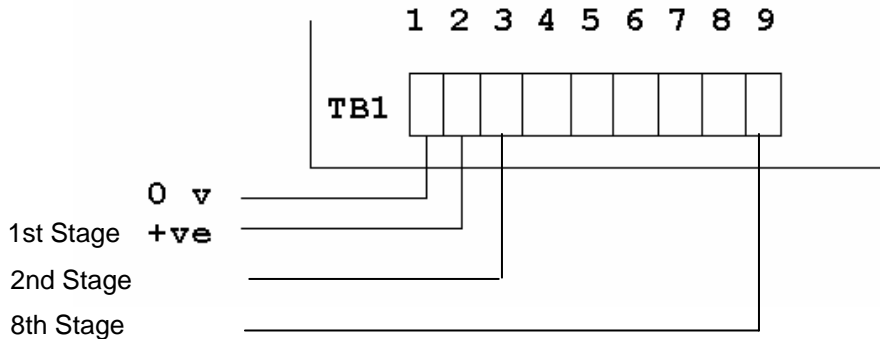


**Clifford & Snell**

# Wiring Diagrams

Tom Cribb Road, Thamesmead,  
London SE28 0BH  
Tel: +44 (0)20 8316 4477  
or (0)20 8317 1717  
Fax: +44 (0)20 8317 2400  
Email: sales@cliffordandsnell.com  
Web Site: www.cliffordandsnell.com

## MULTI - STAGE ALARMS - MODELS YO4 - YO5 - YO8



For all stages connect 0V to terminal 1. For 1st Stage connect +ve to terminal 2. For 2nd Stage connect +ve to terminal 3, etc., up to 8th Stage with +ve connected to terminal 9.

NOTE: ONLY APPROPRIATE TWO WIRES ARE REQUIRED TO BE CONNECTED FOR EACH STAGE

FOR AC UNITS 0V = NEUTRAL and +ve = LIVE

For Sound Selection all stages have independently selectable 5 way di1 switches. SW1 = Stage 1, SW2 = Stage 2, etc.

For sound selection of each stage see the Sound Selection table on page 22.

## XENON STROBE - VISUAL ALARM - YODAC - MODEL V4

The power supply for the Xenon Beacons (STROBES) is via the on-board terminal block.

For DC: - Terminal (+) for +ve and Terminal (-) for 0V.

For AC: - Terminal (L) for LIVE and Terminal (N) for NEUTRAL.

CAUTION: - High voltages are present within the beacon when operational.

## LED FLASHING AND STATUS BEACONS - MODEL V4LED

The power supply for the Multi-Stage Alarms is via the on-board terminal block.

DC only: - Terminal (+) for +ve and Terminal (-) for 0V.

## ELECTRONIC SOUNDER - MODEL CARILLON

Sound signal selection is made by setting of the PCB mounted switches. For switch settings see the Tone Table on page 21.

