



# Wiring Diagrams

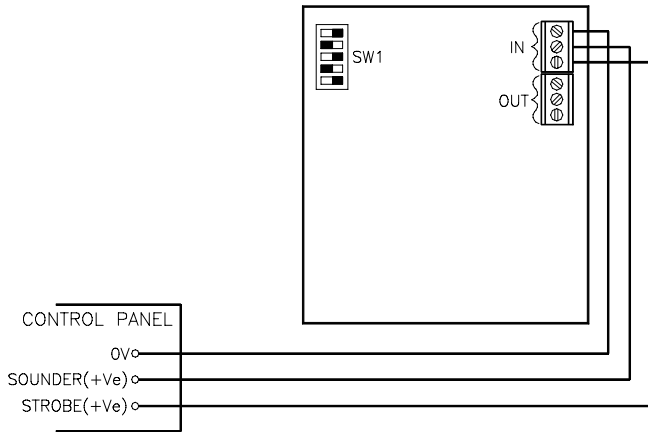
Tom Cribb Road, Thamesmead,  
London SE28 0BH  
Tel: +44 (0)20 8316 4477  
or (0)20 8317 1717  
Fax: +44 (0)20 8317 2400  
Email: sales@cliffordandsnell.com  
Web Site: www.cliffordandsnell.com

Clifford & Snell

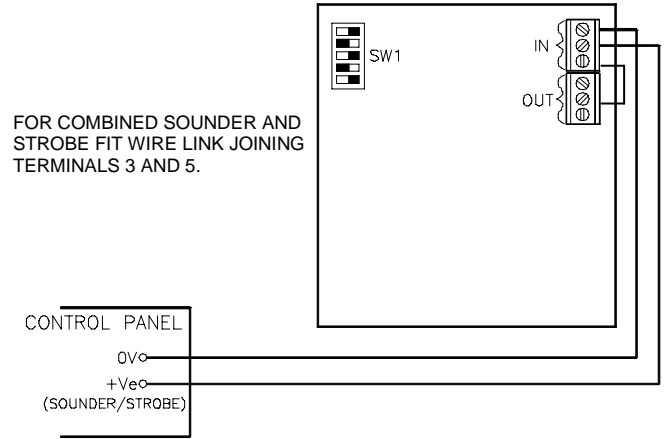
## AUDIBLE AND VISUAL ALARM- MODEL YL2

Sound Signal selection is made by setting of the PCB mounted switches. For switch settings see the Tone Table on page 21.

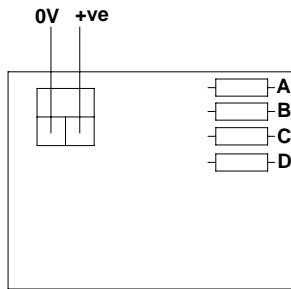
### DC INPUT- SEPARATE CONTROL OF SOUNDER AND STROBE.



### DC INPUT - COMMON CONTROL OF SOUNDER AND STROBE



## QUADALARM - FACE PLATE - ELECTRONIC



	A	B	C	D		
1	1000Hz				_____	_____
	800Hz				-----	0.5S
2		1000Hz			_____	_____
3			1000Hz		_____	_____
			800Hz		-----	0.5S
4				470Hz	_____	_____
				430Hz	-----	1S

## TYPE LC - ELECTRONIC SOUNDER

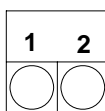
Continuous tone (800Hz)

Positive Vdc to Terminal 1  
Negative Vdc to Terminal 2

Alternate tones (800 / 1000Hz)

Reverse polarity

### LINK IN



TB1

Terminal 1	+	--
Terminal 2	--	+
Sound	Cont	Alt

### LINK OUT

Terminal 1	+	--
Terminal 2	--	+
Sound	Cont	Off

## KS (KEYSWITCH) - MA (MAINS ADAPTER) - DH (DOOR HOLDER)

Connect DC or AC supply to the terminals as labelled.  
Earth continuity of cable sheath or conduit is maintained by fitting earth tags to the entry fittings and linking them together inside the back box.  
On AC units the earth wire **MUST** be connected to terminal marked